

Business Demand Response 2025 PROGRAM



Get paid to shift energy use

Evergy's Business Demand Response (BDR) Program rewards business customers who reduce their electrical load during high-demand days. This is a great opportunity to earn incentive payments, lower your energy bill and contribute to a more reliable grid.

Why participate?

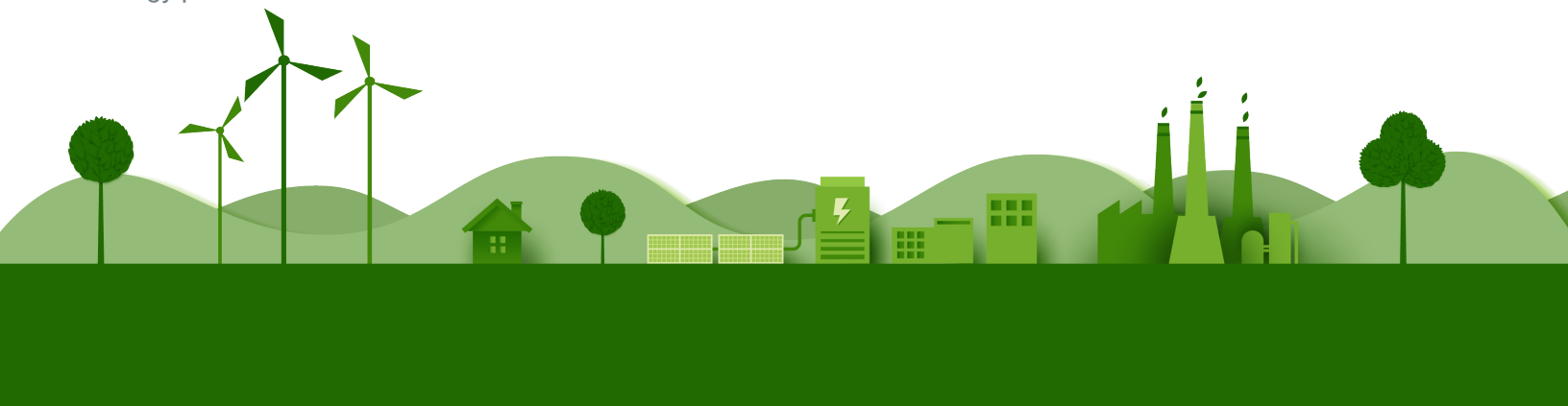
- **Low-risk:** There are no financial penalties
- **Customized:** We'll work together to create a plan specific to your site
- **Support:** The local BDR team is available for technical assistance and event success
- **Insight:** Participation will offer more insight into your facility's electrical usage
- **Awareness:** We'll help promote your efforts to reduce your environmental impact and support grid reliability
- **Savings:** Manage your billed peak demand and reinvest incentives into other energy-saving projects

Common ways to participate:

- Temporarily shut down equipment, production lines and perform routine maintenance
- Utilize permitted self-generation
- Reschedule shifts to off-peak times
- Reduce cooling loads with small temperature adjustments
- Reduce motor loads in elevators, compressors, conveyers, etc.
- Dim lights in non-critical areas

How does it work?

Participants work with us to identify electrical load that can be eliminated or shifted (curtailed) during periods of extreme weather or when system operation costs are very high. We will work together to determine which strategies are best for your unique business needs and create your customized curtailment plan. When these critical events occur, we will provide you as much notice as possible and instructions to execute your plan. At the end of the curtailment season, we will pay you for your contributions to cost-effectively maintain system reliability as a local energy partner.



Program Paths:

Standard:

- \$27-\$35/kW-Season (Summer)
- \$5/kW-Season (Winter)
- Open to all participants

Custom^{*}:

- \$45/kW-Year
- Large customers seeking maximum incentives, tailored approach

Emergency:

- \$2/kWh-event hour
- Large customers highly sensitive to disruption

Winter Availability

Optional with Bonus

Required

Required

Minimum Size

Summer:
No min.

Winter*:
200 kW

*optional

750 kW of
Curtable Load

750 kW of
Curtable Load

Dispatch Expectations

Manage monthly summer peaks and for grid emergencies

Manage max. summer peaks and for grid emergencies year-round; min. 1 winter event

Minimally disruptive, likely to earn higher incentive per hour than Standard option

* Missouri Only



Get started.

Visit: evergy.com/BDR

Email: BDR@evergy.com

Call: 833-303-9173



updated 10/15/24